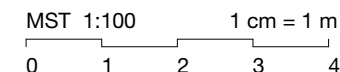


Wohnen am Wiibärg

Weinstrasse 44a
 8280 Kreuzlingen

EG Whg 0-1	32_6_8_1
Anzahl Zimmer	6 1/2
Wohnfläche netto	147.20 m ²
Sitzplatz gedeckt	35.55 m ²
Garten	103.47 m ²
Keller	11.41 m ²



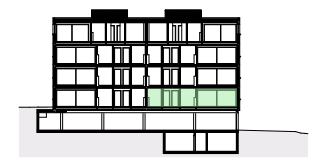
Bauherr + Verkauf
BEMIX Immobilien AG
 Bottighoferstrasse 1
 8280 Kreuzlingen
 t 071 688 44 44
 m info@bemix.ch
 www.bemix.ch



+ PARTNER ARCHITEKTEN AG

Architektur





Wohnen am Wiibärg

Weinstrasse 44a
8280 Kreuzlingen

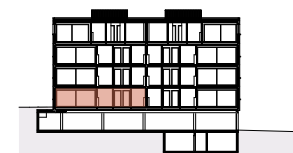
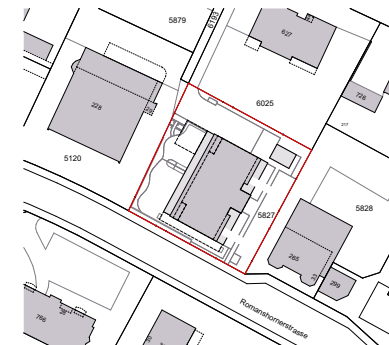
EG Whg 0-1_Umgebung 32_6_8_2

Anzahl Zimmer	6 1/2
Wohnfläche netto	147.20 m ²
Sitzplatz gedeckt	35.55 m ²
Garten	103.47 m ²
Keller	11.41 m ²



Bauherr + Verkauf
BEMIX Immobilien AG
 Bottighoferstrasse 1
 8280 Kreuzlingen
 t 071 688 44 44
 m info@bemix.ch
 www.bemix.ch

felber
 + PARTNER ARCHITEKTEN AG
 Architektur



Wohnen am Wiibärg

Weinstrasse 44a
8280 Kreuzlingen

EG Whg 0-2	32_6_8_3
Anzahl Zimmer	6 1/2
Wohnfläche netto	147.20 m ²
Sitzplatz gedeckt	35.55 m ²
Garten	191.34 m ²
Keller	11.41 m ²

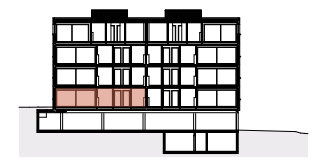
MST 1:100 1 cm = 1 m
0 1 2 3 4

BEMIX
IMMOBILIEN AG

Bauherr + Verkauf
BEMIX Immobilien AG
Bottighoferstrasse 1
8280 Kreuzlingen
t 071 688 44 44
m info@bemix.ch
www.bemix.ch

felber
+ PARTNER ARCHITEKTEN AG
Architektur



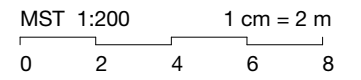


Wohnen am Wiibärg

Weinstrasse 44a
8280 Kreuzlingen

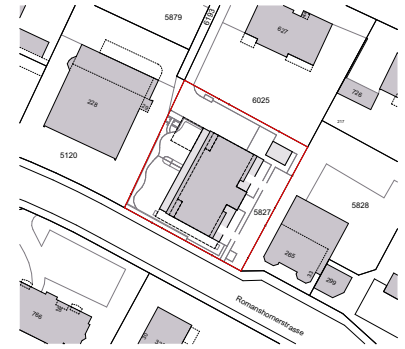
EG Whg 0-2_Umgebung 32_6_8_4

Anzahl Zimmer	6 1/2
Wohnfläche netto	147.20 m ²
Sitzplatz gedeckt	35.55 m ²
Garten	191.34 m ²
Keller	11.41 m ²



Bauherr + Verkauf
BEMIX Immobilien AG
 Bottighoferstrasse 1
 8280 Kreuzlingen
 t 071 688 44 44
 m info@bemix.ch
 www.bemix.ch

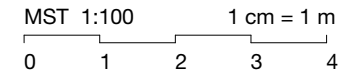
felber
 + PARTNER ARCHITEKTEN AG
 Architektur



Wohnen am Wiibärg

Weinstrasse 44a
8280 Kreuzlingen

OG1 Whg 1-1	32_6_8_5
Anzahl Zimmer	6 1/2
Wohnfläche netto	147.20 m ²
Balkon gedeckt	35.55 m ²
Keller	10.10 m ²



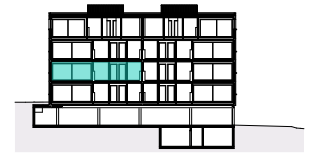
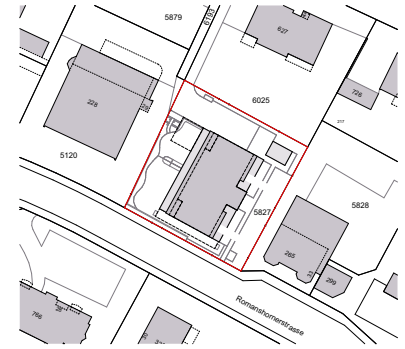
BEMIX
IMMOBILIEN AG

Bauherr + Verkauf
BEMIX Immobilien AG
 Bottighoferstrasse 1
 8280 Kreuzlingen
 t 071 688 44 44
 m info@bemix.ch
 www.bemix.ch

felber
+ PARTNER ARCHITEKTEN AG

Architektur

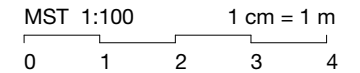




Wohnen am Wiibärg

Weinstrasse 44a
8280 Kreuzlingen

OG1 Whg 1-2	32_6_8_6
Anzahl Zimmer	6 1/2
Wohnfläche netto	147.20 m ²
Balkon gedeckt	35.55 m ²
Keller	10.10 m ²



Bauherr + Verkauf
BEMIX Immobilien AG
 Bottighoferstrasse 1
 8280 Kreuzlingen
 t 071 688 44 44
 m info@bemix.ch
 www.bemix.ch

felber

+ PARTNER ARCHITEKTEN AG

Architektur

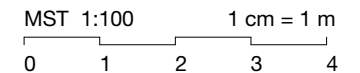




Wohnen am Wiibärg

Weinstrasse 44a
8280 Kreuzlingen

OG2 Whg 2-1	32_6_8_7
Anzahl Zimmer	6 1/2
Wohnfläche netto	147.20 m ²
Balkon gedeckt	35.55 m ²
Keller	10.10 m ²



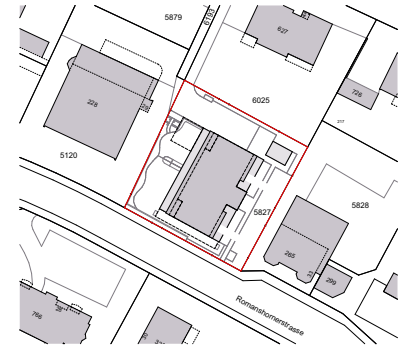
BEMIX
IMMOBILIEN AG

Bauherr + Verkauf
BEMIX Immobilien AG
Bottighoferstrasse 1
8280 Kreuzlingen
t 071 688 44 44
m info@bemix.ch
www.bemix.ch

felber
+ PARTNER ARCHITEKTEN AG

Architektur

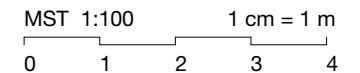




Wohnen am Wiibärg

Weinstrasse 44a
8280 Kreuzlingen

OG2 Whg 2-2	32_6_8_8
Anzahl Zimmer	6 1/2
Wohnfläche netto	147.20 m ²
Balkon gedeckt	35.55 m ²
Keller	10.10 m ²



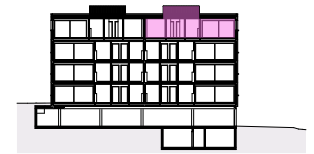
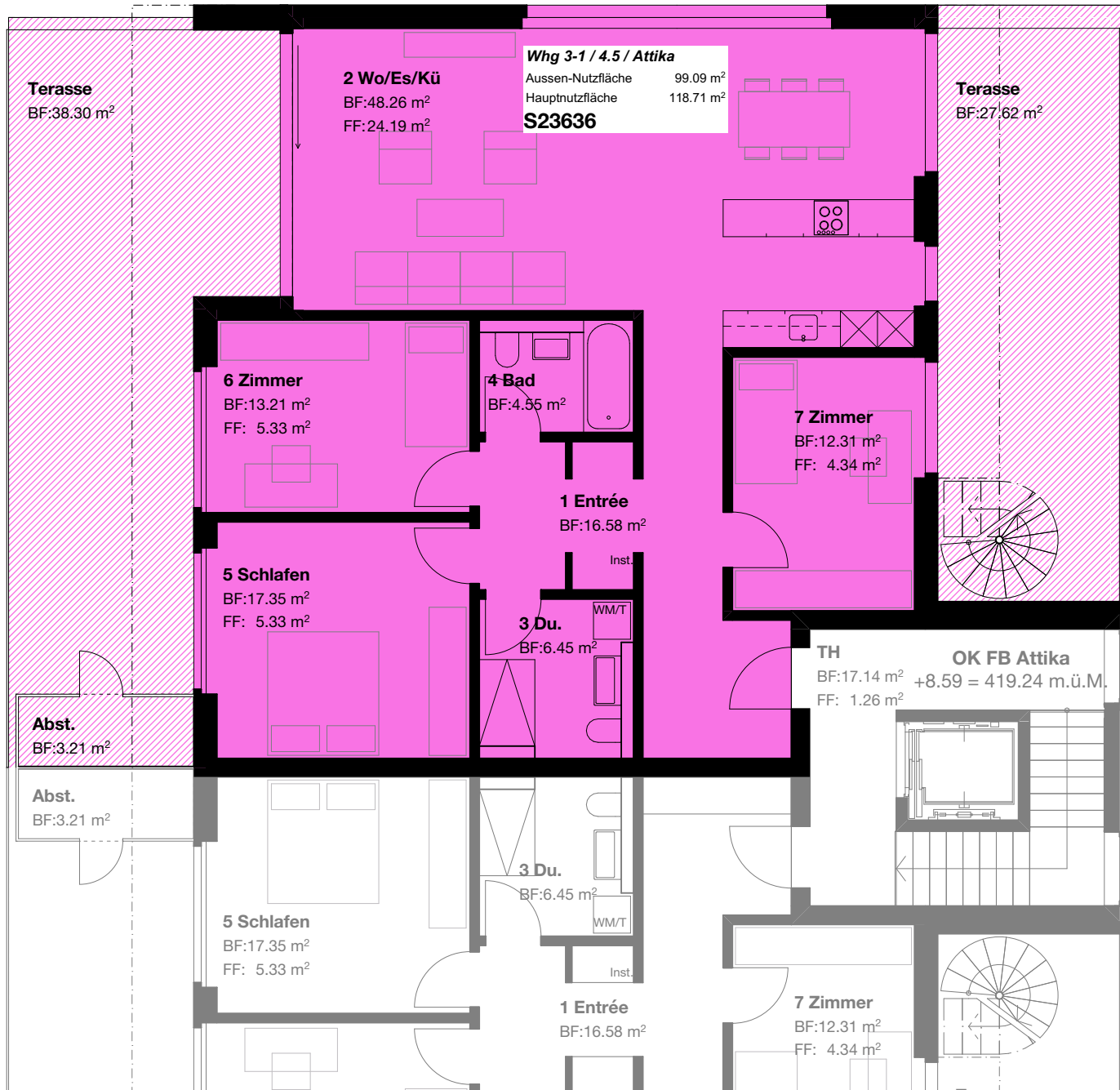
Bauherr + Verkauf
BEMIX Immobilien AG
 Bottighoferstrasse 1
 8280 Kreuzlingen
 t 071 688 44 44
 m info@bemix.ch
 www.bemix.ch

felber

+ PARTNER ARCHITEKTEN AG

Architektur

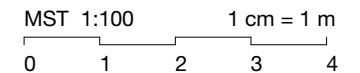




Wohnen am Wiibärg

Weinstrasse 44a
 8280 Kreuzlingen

Attika Whg 3-1	32_6_8_9
Anzahl Zimmer	4 1/2
Wohnfläche netto	118.71 m ²
Terrasse	65.92 m ²
Abstellraum	3.21 m ²
Dachterrasse	32.26 m ²
Keller	13.86 m ²

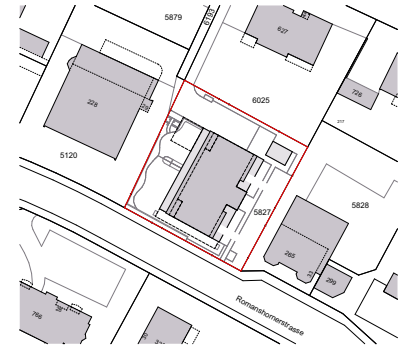
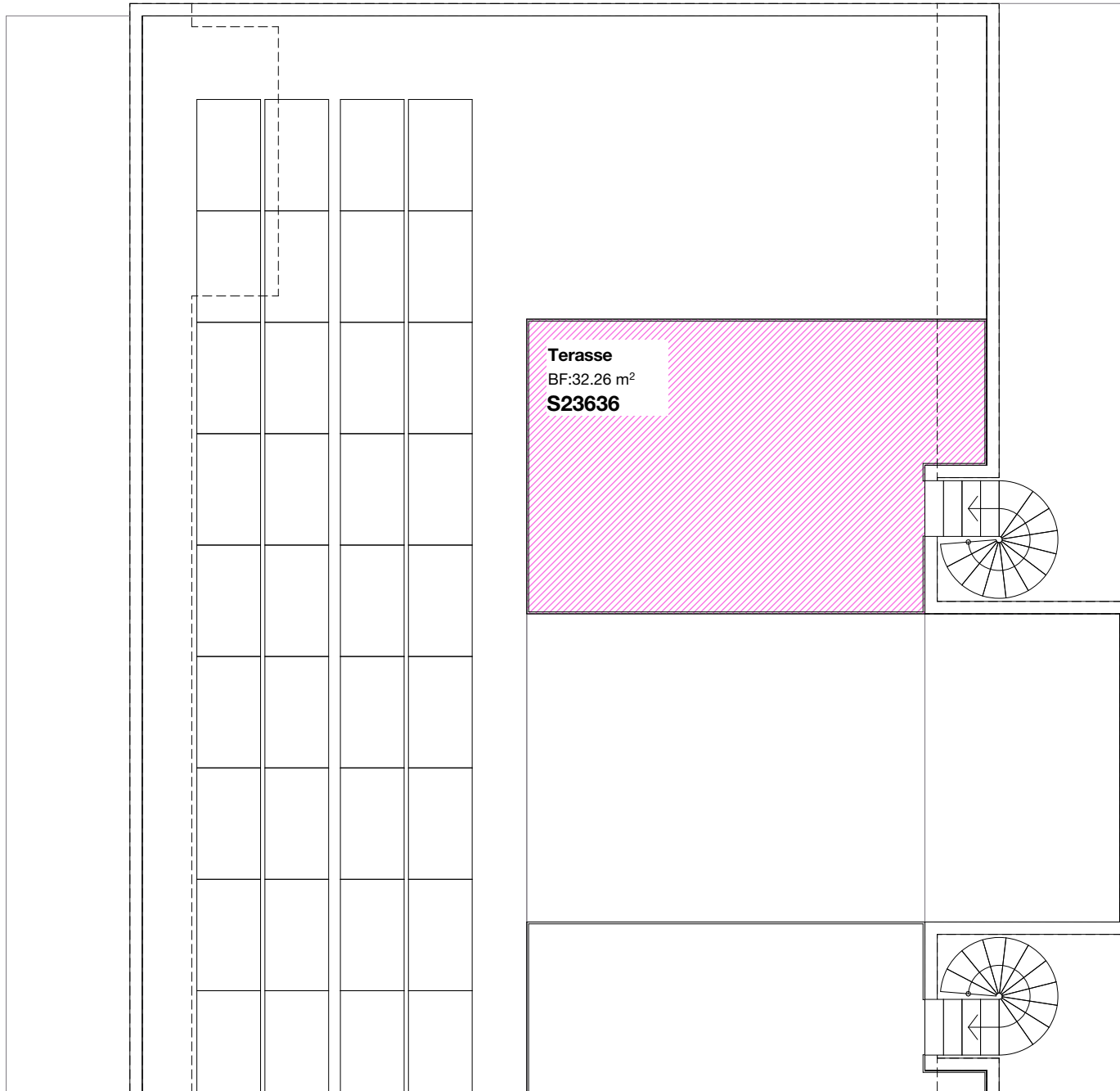


Bauherr + Verkauf
BEMIX Immobilien AG
 Bottighoferstrasse 1
 8280 Kreuzlingen
 t 071 688 44 44
 m info@bemix.ch
 www.bemix.ch



Architektur



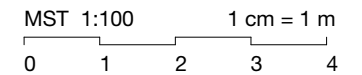


Wohnen am Wiibärg

Weinstrasse 44a
8280 Kreuzlingen

Attika Whg 3-1_DT 32_6_8_10

Anzahl Zimmer	4 1/2
Wohnfläche netto	118.71 m ²
Terrasse	65.92 m ²
Abstellraum	3.21 m ²
Dachterrasse	32.26 m ²
Keller	13.86 m ²

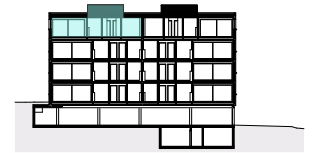
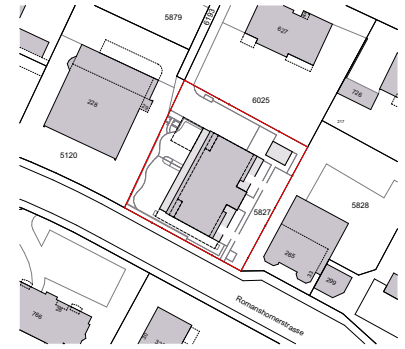
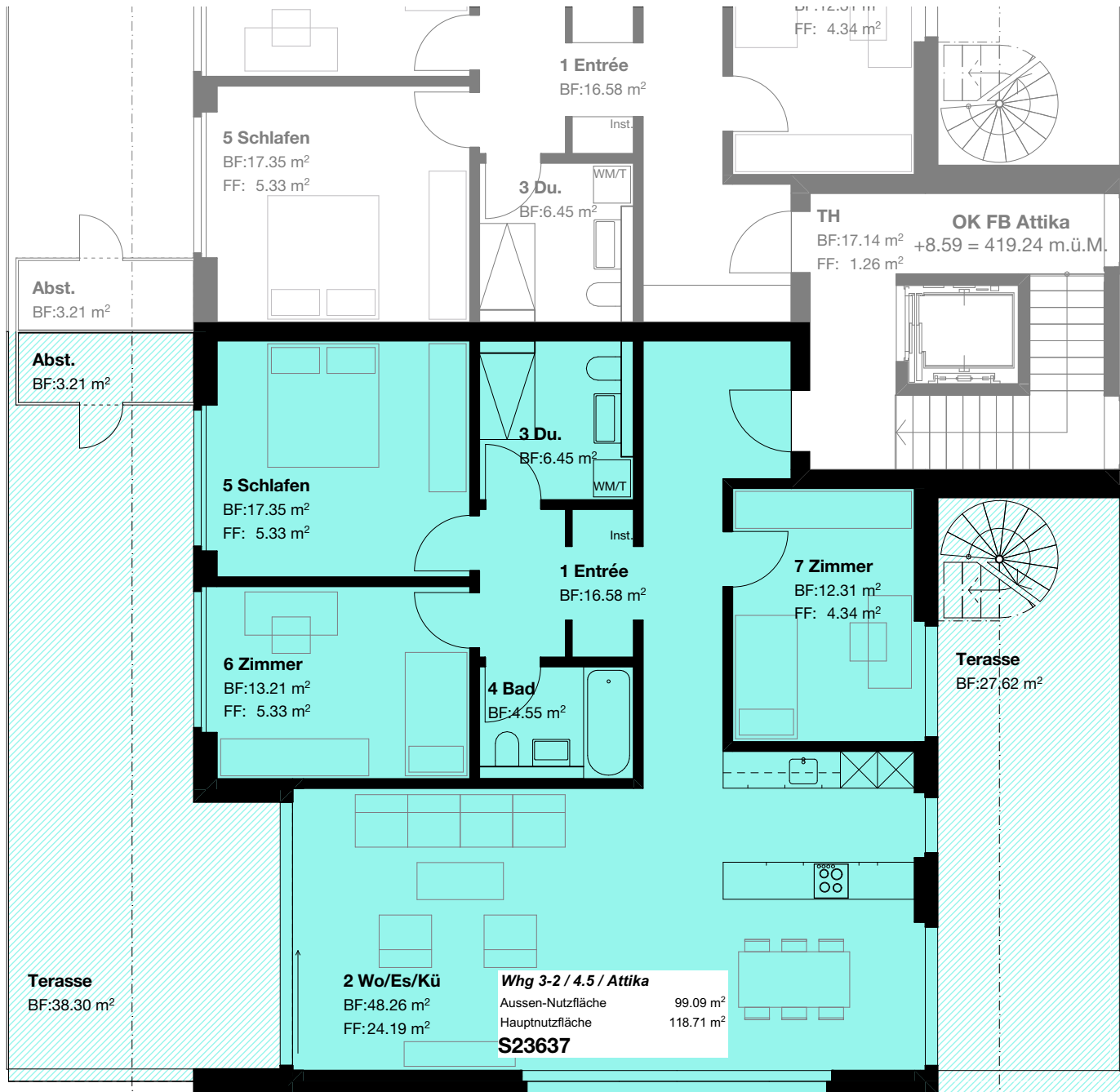


Bauherr + Verkauf
BEMIX Immobilien AG
 Bottighoferstrasse 1
 8280 Kreuzlingen
 t 071 688 44 44
 m info@bemix.ch
 www.bemix.ch

felber
 + PARTNER ARCHITECTEN AG

Architektur

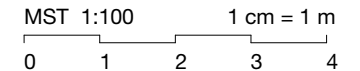




Wohnen am Wiibärg

Weinstrasse 44a
8280 Kreuzlingen

Attika Whg 3-2	32_6_8_11
Anzahl Zimmer	4 1/2
Wohnfläche netto	118.71 m ²
Terrasse	65.92 m ²
Abstellraum	3.21 m ²
Dachterrasse	32.26 m ²
Keller	13.86 m ²



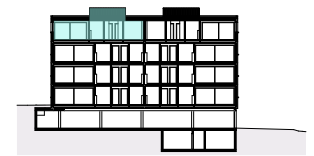
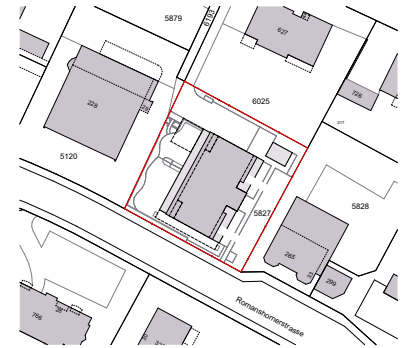
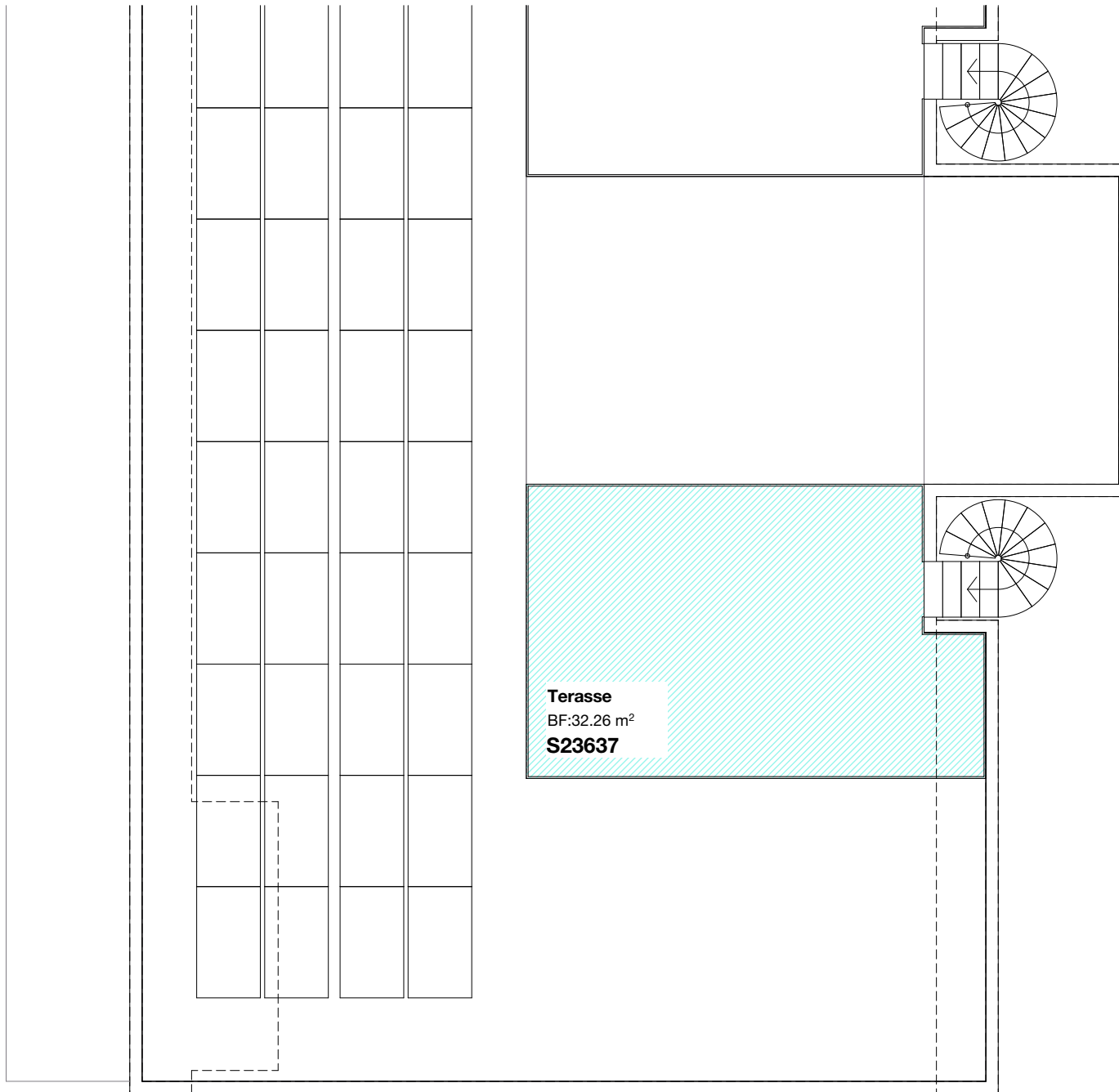
Bauherr + Verkauf
BEMIX Immobilien AG
 Bottighoferstrasse 1
 8280 Kreuzlingen
 t 071 688 44 44
 m info@bemix.ch
 www.bemix.ch

felber

+ PARTNER ARCHITEKTEN AG

Architektur



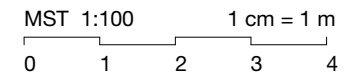


Wohnen am Wiibärg

Weinstrasse 44a
8280 Kreuzlingen

Attika Whg 3-2_DT 32_6_8_12

Anzahl Zimmer	4 1/2
Wohnfläche netto	118.71 m ²
Terrasse	65.92 m ²
Abstellraum	3.21 m ²
Dachterrasse	32.26 m ²
Keller	13.86 m ²

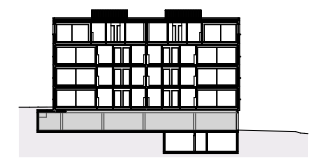
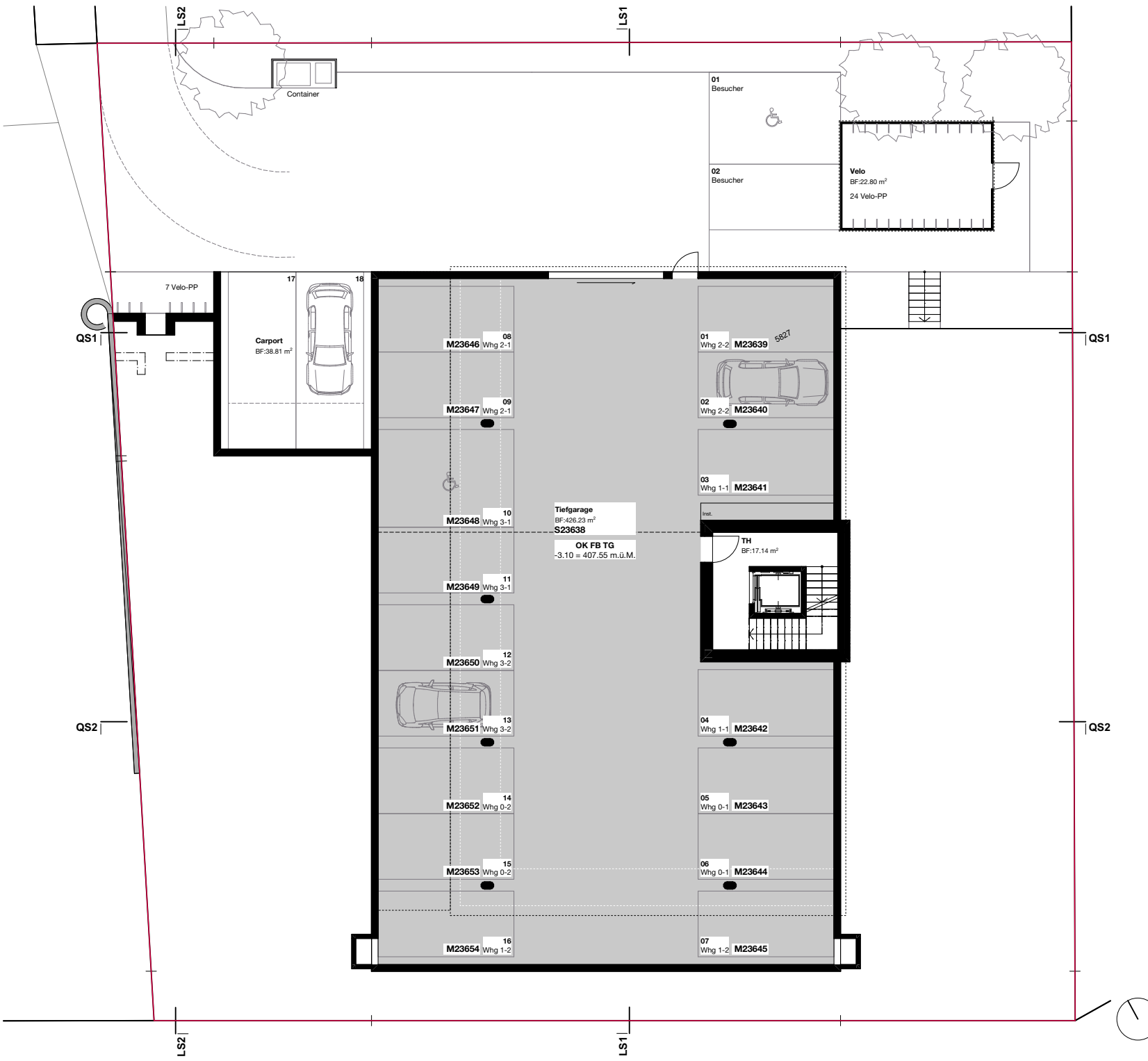


Bauherr + Verkauf
BEMIX Immobilien AG
 Bottighoferstrasse 1
 8280 Kreuzlingen
 t 071 688 44 44
 m info@bemix.ch
 www.bemix.ch

felber
 + PARTNER ARCHITEKTEN AG

Architektur



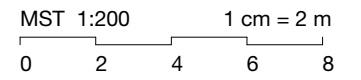


Wohnen am Wiibärg

Weinstrasse 44a
8280 Kreuzlingen

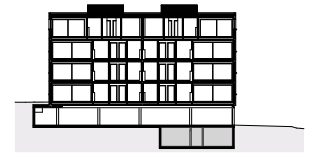
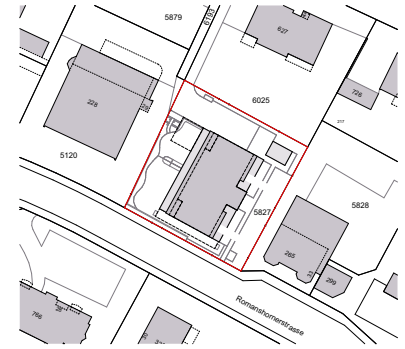
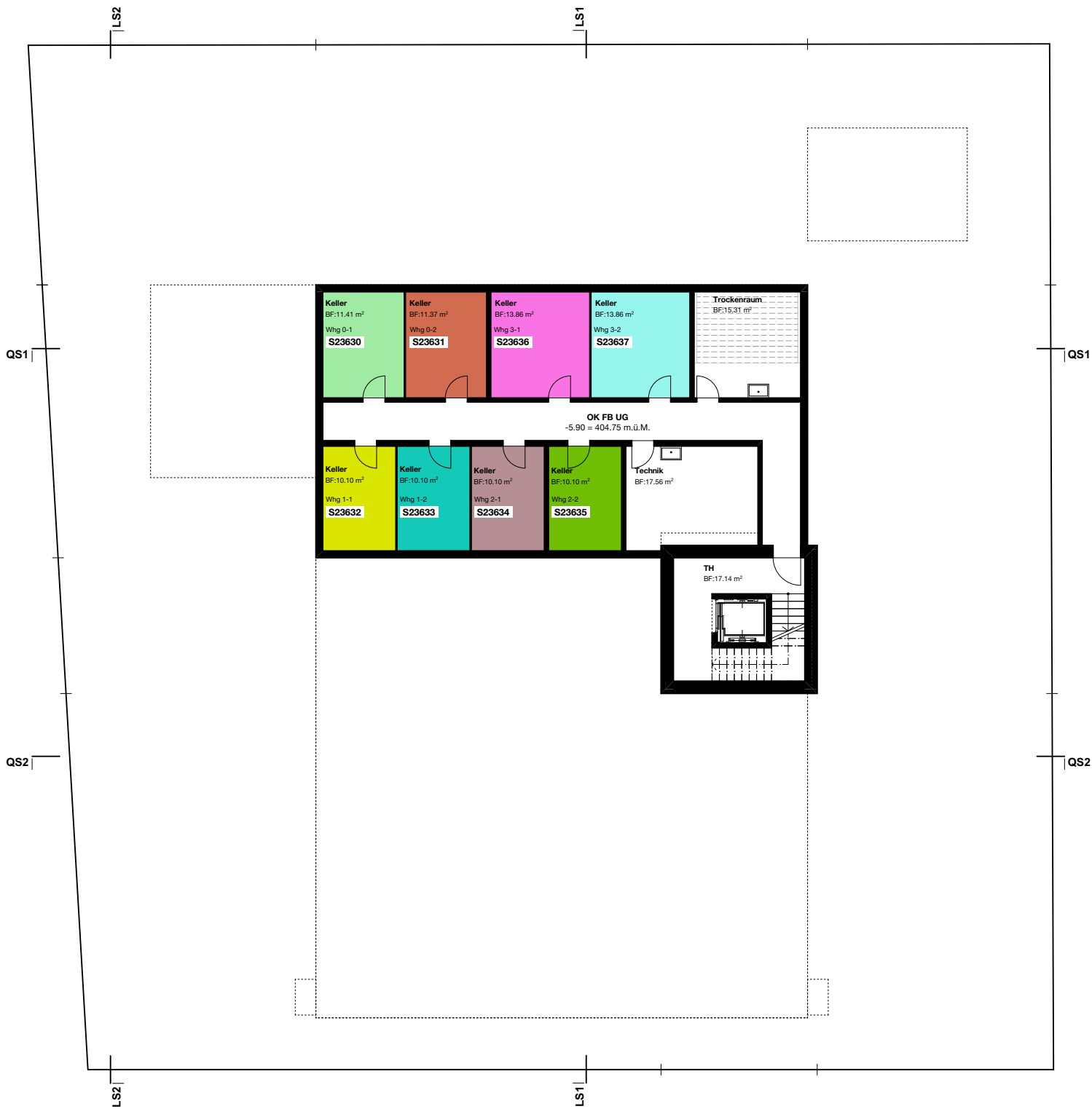
UG Tiefgarage 32_6_8_13

- Tiefgarage 16 PP
- Carport 2 PP
- Aussen - Besucher 2 PP



Bauherr + Verkauf
BEMIX Immobilien AG
 Bottighoferstrasse 1
 8280 Kreuzlingen
 t 071 688 44 44
 m info@bemix.ch
 www.bemix.ch

felber
 + PARTNER ARCHITEKTEN AG
 Architektur

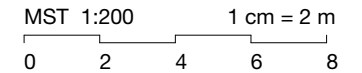


Wohnen am Wiibärg

Weinstrasse 44a
8280 Kreuzlingen

UG2 Keller 32_6_8_14

Kellerabteile	8
Technikraum	1
Waschraum	1










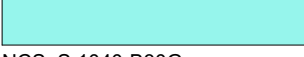

Bauherr + Verkauf
BEMIX Immobilien AG
 Bottighoferstrasse 1
 8280 Kreuzlingen
 t 071 688 44 44
 m info@bemix.ch
 www.bemix.ch

felber

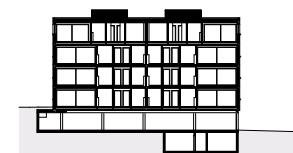
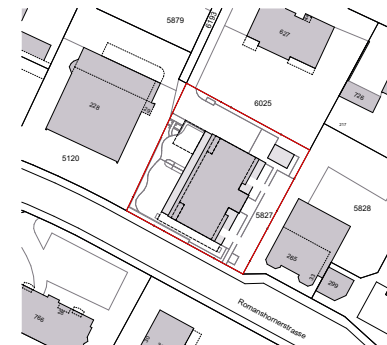
+ PARTNER ARCHITEKTEN AG

Architektur



	S23630	EG	Whg 0-1
NCS S 1040-G20Y			
	S23631	EG	Whg 0-2
NCS S 4020-Y80R			
	S23632	OG1	Whg 1-1
NCS S 1075-G90Y			
	S23633	OG1	Whg 1-2
NCS S 1050-B50G			
	S23634	OG2	Whg 2-1
NCS S 4020-Y90R			
	S23635	OG2	Whg 2-2
NCS S 2070-G50Y			
	S23636	Attika	Whg 3-1
NCS S 2040-R40B			
	S23637	Attika	Whg 3-2
NCS S 1040-B30G			
	S23638		Tiefgarage
NCS S 3000-N			

Deckkraft Farbe Balkon: 50%
 Deckkraft Farbe Gartenanteil: 25%
 Deckkraft Farbe Dachterrasse: 25%



Wohnen am Wiibärg

Weinstrasse 44a
 8280 Kreuzlingen

Farblegende 32_6_8_15



Bauherr + Verkauf
BEMIX Immobilien AG
 Bottighoferstrasse 1
 8280 Kreuzlingen
 t 071 688 44 44
 m info@bemix.ch
 www.bemix.ch



+ PARTNER ARCHITEKTEN AG

Architektur